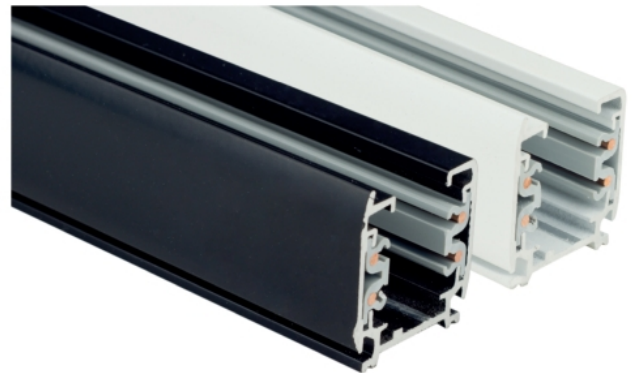
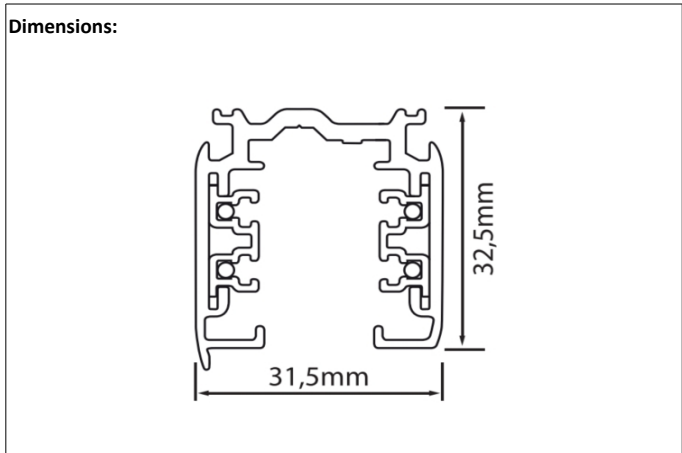




3-phase LTS tracks

3-phase tracks, LTS series. Available in two colors - black and white, and in various lengths - from 1 to 3 meters.



| Code: | Color: | Length: |
|-----------|-----------------|---------|
| 81-01-412 | black (RAL9005) | 1000mm |
| 81-01-413 | white (RAL9003) | 1000mm |
| 81-02-422 | black (RAL9005) | 2000mm |
| 81-02-423 | white (RAL9003) | 2000mm |
| 81-03-432 | black (RAL9005) | 3000mm |
| 81-01-413 | white (RAL9003) | 3000mm |

Parameters:
max. voltage: 400V
max. current: 16A
compatible with adapters: GLOBAL trac, Unipro, etc.
IP rate: P20

Dimensions:
length: from 1000mm to 3000mm
width: 31,5mm
height: 32,5mm

Material:
aluminium

Additional accessories:

