

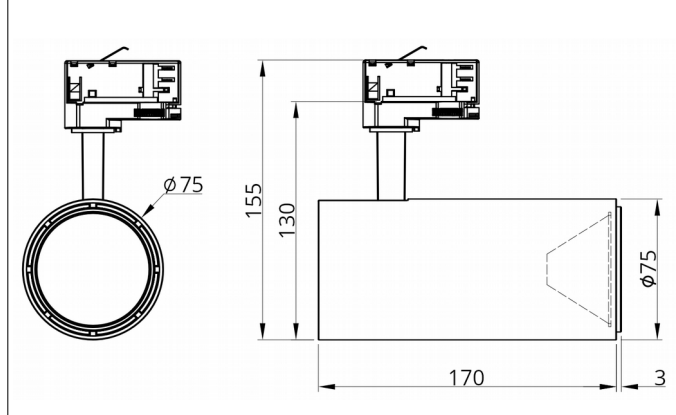


B15 LED Track Light 28W (Samsung)

B15 LED luminaire is an option for customers who are looking for alternatives of metal halide luminaires mounted on the 3-phase lighting tracks. The solution is a functional replacement which delivers the equivalent amount of light at a significantly reduced demand for electricity. Heart of the fixture, is the LED COB module made by Samsung.

Fixture is available in many variants - resulting from a combination of parameters.

Dimensions:



SAMSUNG TRIDONIC

Code*:	CCT/CRI:	Φ Fixture:	Housing:
495-140-7x910S	4000K/90	2935lm	white
495-940-7x910S	4000K/90	2935lm	black
495-135-7x910S	3500K/90	2875lm	white
495-935-7x910S	3500K/90	2875lm	black
495-130-7x910S	3000K/90	2795lm	white
495-930-7x910S	3000K/90	2795lm	black

*x (beam angle) 1-15°, 2-24°, 3-36° (eg. 495-140-72910S = 24°)

Additional picture:



Parametry wspólne:

power factor (PF): >0,95
 power: 28W
 voltage: 230V AC (via 3-phase track)
 beam angle: 15°, 24° or 36°
 light source: COB LED Samsung (LC026)
 efficiency: up to 104lm/W
 SDCM: 2
 lifespan L80/B50/C10: 40.000 hours (according to IEC 62717 norm)
 operating temperature range: from 0°C to +30°C
 CRI: CRI90
 IP rate: IP20
 compatible with track lights: GLOBAL trac, Unipro, etc.

Dimensions:

diameter: 75mm
 length: 170mm

Material:

aluminium housing + PCV
 weight: 1,10kg

photometric data presented with a tolerance +/- 7%

